



**Why KW2 Technology?**

**Perfect backlight or highlight.**

Accessorized to control camera glare.

**Spectacular images - every day**

Color balanced.  
10,000 Lamp hours.  
No lamp adjustment or replacement for years.

**Directional control**

Soft, linear fill with no camera glare.

**No new power**

Refit to existing electrical circuits.

**Total control**

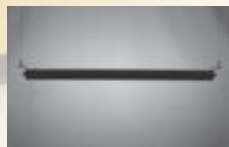
Tungsten or Daylight balance.  
Line voltage or analog dimming (LF154 only).



**Video conference. Distance learning. Small studios. BACKLIGHT or highlight, linear fill with a 2.75" diameter tube light.**

**Power Control**

FUL Standard	100%
Non dimming	
DIM Line Voltage	10-100%
Power line voltage controls intensity (2 wire dimming)	
DAN Analog (LF154 only)	2-100%
Separate 0-10V Circuit controls intensity	



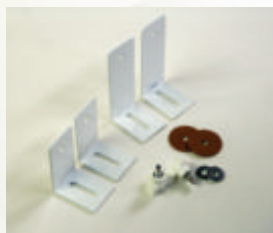
Bare



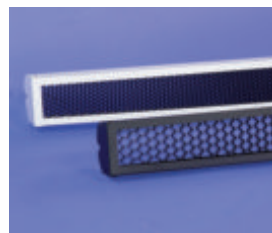
Wide



Medium



Surface mount kit, short and tall brackets, included.



Honeycomb



Bale



### Accessory List

LF15-45HC-C	Honeycomb, 4ft, wide, black
LF15-45HC-T	Honeycomb, 4ft, wide, white
LF15-25HC-C	Honeycomb, 4ft, medium, black
LF15-25HC-T	Honeycomb, 4ft, medium, white
LF12-45HC-C	Honeycomb, 2ft, wide, black
LF12-45HC-T	Honeycomb, 2ft, wide, white
LF12-25HC-C	Honeycomb, 2ft, medium, black
LF12-25HC-T	Honeycomb, 2ft, medium, white
LF15BALE-C	Bale, 4ft, black
LF15BALE-T	Bale, 4ft, white
LF12BALE-C	Bale, 2ft, black
LF12BALE-T	Bale, 2ft, white
2SC	2" Studio C Clamp, short bolts
SCC	Safety cable
10BNC	10ft BNC cable
50BNC	50ft BNC cable

All Fixtures furnished with 12ft power cord  
DAN & DNR furnished with 10ft BNC cable

### Ordering Chart

## 54/830

### Studio Lamps 54W T5HO

Catalog ID	Color Temp	CRI	Light output
54/830	3000K	82%	5000L
54/860	6000K	82%	5000L
24/830	3000K	82%	2000L

24W not available in daylight balance

(One lamp included with each fixture)

### Ordering Chart

## LF154 D C - FUL 120 H

### Fixture Model

LF 154  
4ft Single Lamp  
Recessed Linear Fill

LF 124  
2ft Single Lamp  
Recessed Linear Fill

### Lens

D: Clear (standard)  
N: No lens  
W: White  
F: Fresnel

### Color

C Black Housing  
T White Housing

### Dimming Options

FUL - Full power ballast  
DIM - Line voltage dimming  
DAN - 0-10V Analog dimming

FUL - Full power ballast ONLY

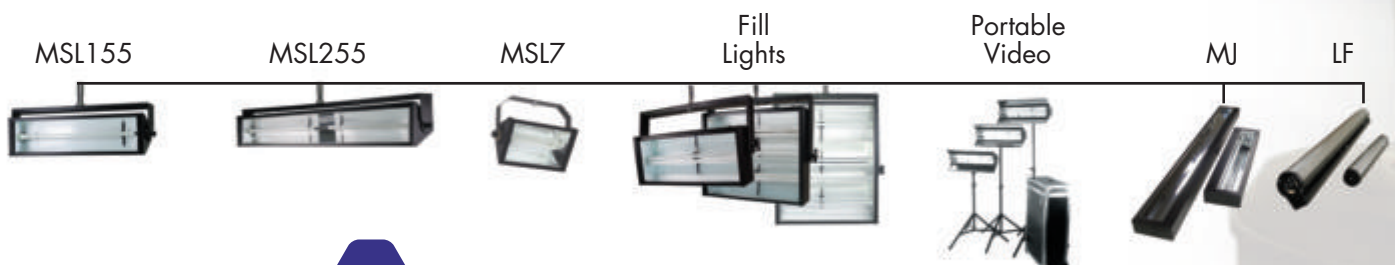
### Voltage

120V, 60Hz  
230: 230V, 50Hz  
277: 277V, 60Hz

### Cord Set

P5: 5-15P (3 prong, 'Edison cord set) 120V Models only  
A10: 10ft 14/3 flex armored whip  
B: BNC jacks, no power cord for DAN only  
PB: 120V, 5-15P cord, BNC jacks for 120V DAN Only  
C: 12ft 3 conductor cord, no plug  
CB: 12ft 3 conductor cord, no plug BNC jacks for DAN only  
B, PB, and CB models furnished with 10ft BNC cable

### Available Models



### Specifications

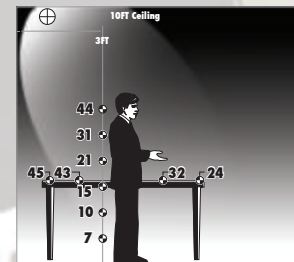
Sound rating	>Class A
Start temperature	50 degrees F
Lamp type	T5HO triphosphor
Lamp frequency	25,000 Hz
Power factor	>0.95
Total Harmonic Distortion	<10%
Transient protection	EMI Filter FCC Part18C Class A IEEE 587A (ANSI C62.41)
Beam Angle	@ 0 = 115, @ 90 = 70
Field Angle	@ 0 = 170, @ 90 = 108

### LF154

Housing	10 lbs, aluminum, black or white
Power consumption	0.5Amps @ 120V,60Hz (54 Watts) 0.22Amps @ 277V,60Hz (54 Watts)*
Peak Candlepower	2,760 Candelas
Typical lamp output	5,000 Lumens

### LF124

Housing	6 lbs, aluminum, black or white
Power consumption	0.23Amps @ 120V,60Hz (24 Watts) .10Amps @ 277V,60Hz (24 Watts)*
Peak Candlepower	1,100 Candelas
Typical lamp output	2,000 Lumens



### Values shown in Foot Candles

Vertical FC on speaker.  
Horizontal FC on table.  
Three LF154's per row,  
data at center of row.